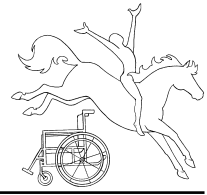


Ride On



Annual Report 2024 – Delivering Generations of Service

About Us: Ride On specializes in adaptive horseback riding and therapy services. We teach riding skills to children and adults with intellectual and physical disabilities, and we provide physical, speech and occupational therapy using the movement of the horse to improve specific medical conditions. Our staff includes 8 instructors, 7 therapists and over 50 horses. Ride On has now given over 157,700 lessons and treatment sessions in our 30-year history - improving the quality of life in our community.

Service: In 2024, Ride On provided 10,600 lessons and treatments to an average of 250 clients on a weekly basis from four facilities. 125 volunteers donated nearly 15,000 hours of work. 75% of our riders and patients were children under age 18; 50% are physically and 50% are intellectually disabled. We serve many types of disabilities with autism being the most frequent. Many riders and patients have multiple disabilities requiring extensive staff and volunteer support.

Unique Capacity: Ride On has been nationally accredited since 1994 and is now the only accredited provider of adaptive riding and therapy services in all of Los Angeles or Ventura County. Ride On provided nearly 2,000 physical, occupational and speech therapy treatments to 85 patients primarily incorporating the unique movement of the horse.

Scholarships: Ride On subsidizes the cost of lessons and treatments for all participants. Beyond that, we gave scholarships ranging from free lessons to ½ price for over 1,500 lessons or treatments to 50 families.

Partnerships: Our newest partnership is with the **City of Pasadena** providing service in the San Gabriel Valley. Ride On is the only program in California with four operating sites with service reaching from the Oxnard Plains into the Conejo, Simi, San Fernando and San Gabriel Valleys.

Ride On completed 24 years partnering with the **Conejo Recreation and Park District** which donates the lease of two ranches in Thousand Oaks comprising 33 acres. Walnut Grove, our home for 24 years, is the center for our adaptive and therapy services programs. Rancho Potrero Community Equestrian Center is the heart of a growing equestrian education center for all abilities.

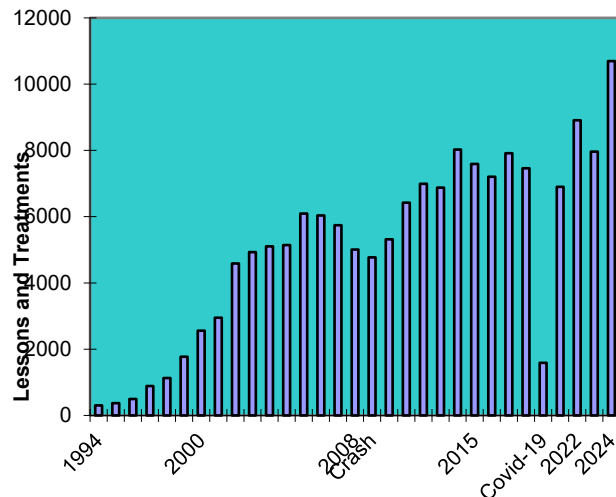
We partner with the **Regional Center** system to provide adaptive riding and therapy services and we are also proud to be recognized as a **US Equestrian Federation Community Outreach Organization** and a **USEF Para Dressage Center of Excellence**.

Other partnerships include **Horses in the Hood**, **Safe Passage Youth Foundation**, **Turner Syndrome Foundation**, **Tarzana Treatment Center**, and **CRPD Therapeutics** to provide riding lessons for “at risk” youth, teens struggling with substance abuse and summer programs for campers with disabilities.

Play LA: Ride On also partners with the City of Los Angeles’ Play LA Adaptive Program to provide para-equestrian programming for youth with disabilities and at-risk populations leading up to the 2028 Olympic and Paralympic games.

Accountability and Leadership: Ride On continues to lead in the nonprofit sector in service delivery and education. We organize and host a free Networking and Education Day for industry professionals, teach Instructor Workshops and manage and host the CALNET Show and US Equestrian Federation para equestrian clinics. Ride On sees itself as a public trust and we have always been a leader in transparency to the public. For years we have posted our audited financial statements and IRS tax forms on our website at www.RideOn.org and we have earned a www.guidestar.org Platinum Seal of Transparency.

Ride On Lessons Given 1994 - 2024
157,700



2024 Operating Support*	\$3,069,660
Donations	28.2%
Lessons and Therapy Services	26.1%
Fundraising Events	3.7%
Grants – Capital and Operating	12.7%
Community Equestrian Center	28.2%
Other	1.1%
2023 Operating Expenditures*	\$2,411,663
Instruction and Program Salaries	42.5%
Horse & Ranch Operations	19.7%
Feed	10.1%
Administration	3.6%
Fundraising	2.7%
Insurance	1.6%
Supplies & Other	12.3%
Depreciation	7.5%
Net Ordinary Income: \$657,997	
Net Other Revenue (Capital): \$1,522,000	
Net Assets: \$5,431,489	
* 2024 Interim data as of 2/18/25. Complete audit and IRS tax filings at: www.RideOn.org	